

“Choose **PSA**”

**THE NEW
5 SERIES
SMOKE
ALARM**



LIFESAVER

PSA LIFESAVER 5 SERIES SMOKE ALARMS

PSA Lifesaver has been protecting Australian families and households for over 25 years.

In 2010, PSA Lifesaver is celebrating its 25 year anniversary by releasing the most innovative and technically advanced range of smoke alarms ever released into the Australian market, the new 5 Series.

The new 5 Series smoke alarms were designed in conjunction with electrical contractors to ensure they provide the most efficient and flexible fit and installation.



5 SERIES FEATURES

Australian design and patented

Hinge-less surface
mount base plate

Easier and quicker to fit
and install

**PATENTED
NEW QUICK
SLIDE DESIGN**

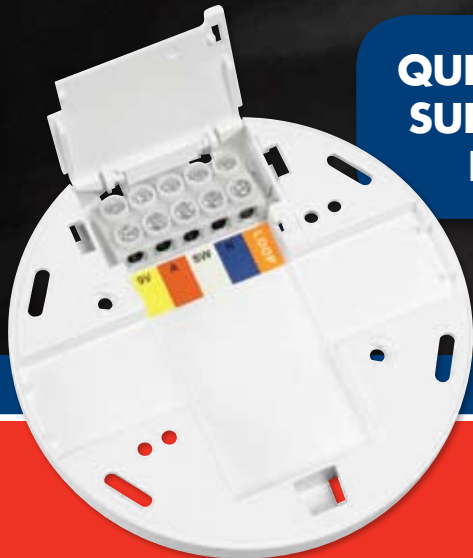


5 SERIES FEATURES

Extra large cable terminals for easy installation

Multiple fixing holes to suit junction boxes and knock out for conduit entry

Suitable for ceiling or wall mount



**QUICK TO INSTALL
SURFACE MOUNT
BASE PLATE**

5 SERIES FEATURES

Extra large Test & Hush button for easy testing. Designed for easy reach with broom handle

Australia's first alarm LED memory latch for 5 minutes after alarm to indicate "first to alarm" smoke alarm

4th terminal (9V) allows operation with fire indication panel to form part of an early warning indicator system

**EXTRA LARGE
TEST & HUSH
BUTTON**



PHOTOELECTRIC SMOKE ALARMS

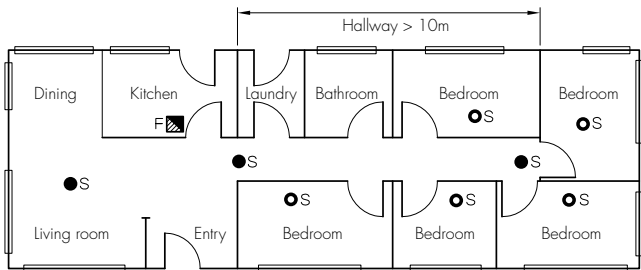
Smoke alarms may detect visible fire particles associated with slow smouldering fires sooner than ionisation smoke alarms.

IONISATION SMOKE ALARMS




Smoke alarms may detect invisible fire particles associated with fast flaming fires sooner than photoelectric smoke alarms.

RECOMMENDED LOCATIONS OF ALARMS

PSA strongly recommends that both ionisation and photoelectric smoke alarms be installed to help insure maximum detection of the various types of fires that can occur within the home.



LEGEND:

-  F = Fire extinguisher (dry chemical type)
-  ● S = Photoelectric Smoke alarm
-  ○ S = Ionisation Smoke alarm

Fires develop in different ways and are often unpredictable.

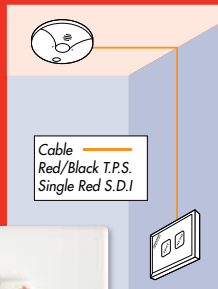
For maximum protection, we recommend that both ionisation and photoelectric smoke alarms be installed.

Smoke alarms should be replaced every ten years.

5 SERIES ACCESSORIES

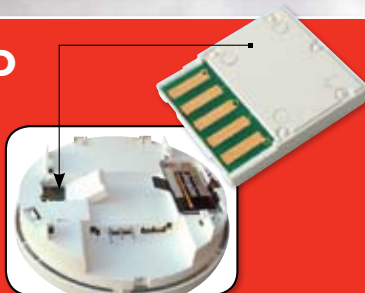
REMOTE TEST/HUSH WALL PLATE AND CARD SET

- Convenient for testing and silencing hard to reach smoke alarms
- Operates on one or up to 24 interconnecting smoke alarms
- Complete with one Test/Hush Plate (LIFTHP) and one Test/Hush Card (LIFTHC)
- Compatible with Lifesaver 3000 and 5 series smoke alarms



REMOTE TEST/HUSH CARD

- Required for each smoke alarm connected to LIFTHP
- Easily inserts into the back of compatible smoke alarms
- Compatible with Lifesaver 3000 and 5 series smoke alarms



PSA LIFESAVER 5000

Ionisation smoke alarm

- 240VAC with 9V battery backup
- Sensitive to fast flaming type fires



Specifications:

| | |
|-------------------------|---|
| Compatible with: | All PSA Lifesaver range of smoke alarms, heat alarm, strobe light and auxiliary devices, Remote test and hush plate and chip, Interconnect up to 24 units |
| Detection Method: | Ionisation (Dual Ionisation Chamber) |
| Alarm Sound: | 85dB at 3 metres |
| Low Battery Indication: | Sounds a chirp at 30-40 second intervals, in addition to red LED indicator flashing |
| Alarm Duration: | As long as smoke is present, unit automatically resets when smoke clears |
| Alarm Indication: | Flashing red LED indicator |
| Compliance: | Activfire listed to AS3786:1993. Australian Standards Certified Product. Australian Electrical Authority Approval |
| Power Requirement: | 240V AC 50Hz since wave supply. Supplied with alkaline 9Vdc battery |
| Rating: | 80mA max per alarm |

PSA LIFESAVER 5800

Photoelectric smoke alarm

- Sensitive to slow smouldering fires
- 240VAC with 9V battery backup
- Insect screen over smoke sensing chamber to reduce nuisance alarm



Specifications:

| | |
|-------------------------|---|
| Compatible with: | All PSA Lifesaver range of smoke alarms, heat alarm, strobe light and auxiliary devices, Remote test and hush plate and chip, Interconnect up to 24 units |
| Detection Method: | Photoelectric |
| Alarm Sound: | 85dB at 3 metres |
| Low Battery Indication: | Sounds a chirp at 30-40 second intervals, in addition to red LED indicator flashing |
| Alarm Duration: | As long as smoke is present, unit automatically resets when smoke clears |
| Alarm Indication: | Flashing red LED indicator |
| Compliance: | Activfire listed to AS3786:1993. Australian Standards Certified Product. Australian Electrical Authority Approval |
| Power Requirement: | 240V AC 50Hz since wave supply. Supplied with alkaline 9Vdc battery |
| Rating: | 80mA max per alarm |

PSA LIFESAVER 5800RL

Photoelectric smoke alarm

- Sensitive to slow smouldering fires
- 240VAC with rechargeable lithium battery
- Insect screen over smoke sensing chamber to reduce nuisance alarm

LITHIUM FIXED
RECHARGEABLE
BATTERY



Specifications:

| | |
|-------------------------|---|
| Compatible with: | All PSA Lifesaver range of smoke alarms, heat alarm, strobe light and auxiliary devices, Remote test and hush plate and chip, Interconnect up to 24 units |
| Detection Method: | Photoelectric |
| Alarm Sound: | 85dB at 3 metres |
| Low Battery Indication: | Sounds a chirp at 30-40 second intervals, in addition to red LED indicator flashing |
| Alarm Duration: | As long as smoke is present, unit automatically resets when smoke clears |
| Alarm Indication: | Flashing red LED indicator |
| Compliance: | Activfire listed to AS3786:1993. Australian Standards Certified Product. Australian Electrical Authority Approval |
| Power Requirement: | 240V AC 50Hz since wave supply. |
| Rating: | 80mA max per alarm |

5 SERIES ACCESSORIES



HEAT ALARM

240V fixed temperature
heat alarm at 57.2°C



VISUAL SIGNALLING DEVICE

Strobe light for hearing impaired



ISOLATION RELAY

Connect to auxiliary devices,
Security alarm panels and
fire indication panels

PSA LIFESAVER SMOKE DETECTOR TESTER

Safely and efficiently
tests smoke alarm
chamber





**FOR FURTHER INFORMATION ON THE PSA
LIFESAVER NEW 5 SERIES SMOKE ALARM RANGE
OR ANY OF OUR OTHER PRODUCTS, PLEASE
CONTACT YOUR PSA SALES REPRESENTATIVE**

17 Millicent Street, Burwood, VIC 3125 Australia

Tel: **1300 PSA PRODUCTS (1300 772 776)**

Fax: (03) 9888 9993

enquiry@psaproducts.com.au

FIRE • SECURITY • INTERCOMS

psaproducts.com.au