



**LIFESAVER**

**PHOTOELECTRIC 9 VOLT  
BATTERY OPERATED  
SMOKE ALARM MANUAL**

**MODELS:  
LIFPE9/1  
LIFPE9M**



**MAIN FEATURES:**

- PHOTOELECTRIC SENSOR SUITABLE FOR SLOW SMOULDERING FIRES
- INSECT SCREEN SURROUND PE SENSOR
- SLIM-LINE COMPACT SIZE
- MUTE & ALARM TEST BUTTON (LIFPE9M)
- ALARM TEST BUTTON (LIFPE9/1)
- LOW BATTERY WARNING SIGNAL
- MOUNTING SCREWS SUPPLIED
- COMPLIES & APPROVED TO AUSTRALIAN STANDARD AS3786
- LOUD 85dB ALARM

**This instruction leaflet contains important information on the correct installation and operation of your smoke alarm. Please read all the information before commencing installation and retain for future reference.**

**SPECIFICATION**

Power Source : 9V Battery  
 Battery Type : Eveready 1222  
                   : Energizer 522  
                   : Gold Peak 1604S  
                   : Duracell MN 1604  
                   : Ultralife U9VL

Operating Temp. : 0°C to 45°C  
 Ambient Humidity : 10%-90%  
 Alarm Sound Level : 85 Decibels at 3 metres  
 Battery Life : 1 year minimum  
 Tested & Passed to : AS3786-1993

**LOCATING THE SMOKE ALARM**

This smoke alarm is a single station photoelectric alarm and should NOT be connected to other smoke alarms. If your dwelling is a single storey, for minimum protection you should fit a smoke alarm in the hallway between the living areas (incl. kitchens) and sleeping areas. Place it as near to the living areas as possible and ensure the smoke alarm is audible and can be heard when the bedrooms are occupied. See Figure 1 for examples.

If your dwelling is multi storey, for minimum protection a smoke alarm should be fitted at the bottom of the staircase with further smoke alarms fitted on each upstairs landing. This also includes basements. See Figure 2 for examples.

NOTE: For maximum protection a smoke alarm should be fitted in every room (except kitchen, bathroom and garage). DO NOT FIT A SMOKE ALARM IN THE KITCHEN or BATHROOM, as cooking fumes or steam may trigger the smoke alarm. A Photoelectric smoke alarm may be located near the kitchen but not directly over the cooking area.

DO NOT FIT A SMOKE ALARM IN A GARAGE, as exhaust fumes are likely to set it off.

**POSITION THE SMOKE ALARM**

As smoke rises, it is advisable to mount the smoke alarm on a ceiling in a central position. Avoid areas where there is no air circulation. Such as corners of rooms, in the peak of an "A" frame type of ceiling and air ducts used for

heating and air conditioning. If wall mounting, do not mount tight into corners. See Figure 3 for example. Areas to be avoided include the following:-

- Situations where the temperature may fall below 0°C or rise above 45°C.
- Humid areas such as bathrooms, kitchens and shower rooms where the relative humidity may exceed 90%.
- Fume filled environments such as garages. Exhaust gases may also cause false alarms.
- Adjacent to or directly above hot components such as radiators or wall vents that can affect the direction of air currents
- In very dusty or dirty environments such as workshops

FIGURE 1 – SINGLE STOREY DWELLING

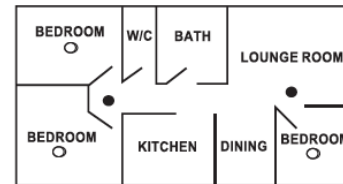
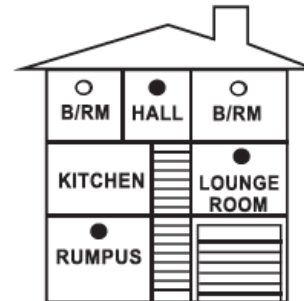
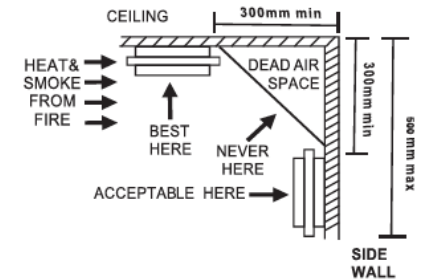


FIGURE 2 – MULTI STOREY DWELLING



- Smoke alarm for minimum protection
- Smoke alarm for additional protection

FIGURE 3 – POSITION THE SMOKE ALARM



**INSTALLING THE SMOKE ALARM**

This smoke alarm is powered by a battery and requires no additional wiring.

- A mounting plate is provided on the back of the smoke alarm.
- Remove the mounting plate from the back of the smoke alarm by holding the mounting plate and twisting the smoke alarm in the direction indicated by the "OFF" arrow on the smoke alarm cover.
- Having established the mounting location, ensure that there is no electrical wiring or pipe work in the area adjacent to the mounting surface.
- Take the mounting bracket and mark two mounting hole locations.
- Drill holes in the positions marked.
- Insert the wall plugs into the drilled holes.
- Screw the mounting plate to the mounting surface. DO NOT OVER TIGHTEN.
- Attach the battery to the connector clip and then place the battery as shown in the illustration in the compartment.
- Place the smoke alarm on the mounting plate and rotate the alarm until it connects into the mounting plate. Twist the smoke alarm in a clockwise direction until you hear 2 clicks. The smoke alarm is now locked in position.
- Test the smoke alarm for correct operation using the test button facility.

### TAMPER PROTECTION FEATURE

To make the smoke alarm tamper protected, a tamper resistant means has been provided. To utilise this feature break off one of the tamper protection pins from the mounting plate and insert the pin in the hole on the side of the mounting bracket.

Using this feature will help deter children and others from removing the smoke alarm from the mounting plate.

The tamper protection pin will have to be removed in order to replace the battery. Using a tool (small screwdriver) lever the pin away from the mounting plate and rotate the smoke alarm to release it from the mounting plate.

### OPERATING YOUR SMOKE ALARM

Once the smoke alarm has been installed a small red indicator light (LED), positioned under the test button, will flash approximately every 30 seconds, in normal operation. If smoke is detected the unit will emit a loud pulsating alarm until the air is cleared. The red LED will flash indicating an alarm condition.

### ALARM SILENCER (MUTE) FEATURE

The smoke alarm model LIFPE9M have the capability of temporarily disabling the alarm circuit for approximately 10 minutes. This feature is to be used only when a known alarm condition, such as smoke from cooking, activates the smoke alarm.

The smoke alarm is desensitized marginally by pushing the MUTE/TEST button on the smoke alarm. The alarm will silence immediately and the red LED will flash approximately every 8 seconds for about 10 minutes to indicate the alarm is in the mute position.

The smoke alarm will automatically reset after approximately 10 minutes. If after this period particles of combustion are still present, the alarm will sound again. The mute button can be used repeatedly until all the air has been cleared of the cause of the alarm.

**NOTE: Dense smoke will override the alarm silencer (MUTE) feature and sound a continuous alarm.**

### TESTING YOUR SMOKE ALARM

It is recommended that you test your smoke alarm once a week to ensure the smoke alarm is working correctly. Push and hold the test button for approximately 3 seconds. A loud pulsating alarm should sound to indicate the correct function. During the alarm the indicator light will flash quickly.

### MAINTAINING YOUR SMOKE ALARM

The smoke alarm is virtually maintenance free. However, periodically, clean your smoke alarm to prevent dust build up. This can be done by using a vacuum cleaner with the brush attachment. Gently clean the front grill section and sides.

### BATTERY REPLACEMENT

The smoke alarm is powered by one 9V battery. The battery should provide operation for at least one year under normal operating conditions. If the smoke alarm emits a short "beep" once every 30 seconds the battery is at the end of its life and should be replaced immediately. The low battery "beep" will continue for at least 7 days or until the battery is replaced. Use only those 9V batteries listed in the specification section of this manual.

**These batteries can be purchased at your local retail outlet or supermarket. Please use only specified batteries. Use of different battery may have detrimental effect on operation.**

**It is recommend that smoke alarms to be replaced every 10 years.**

### MISSING BATTERY INDICATOR

This smoke alarm will not operate without a fitted battery. When the battery is removed from the smoke alarm, a spring lever will rise in the battery compartment which will prevent the unit from being locked in place on the mounting plate.

### IMPORTANT SAFEGUARDS

Installation of your smoke alarm is only one step in your safety plan. Other important steps should be taken to further improve your safety:-

- Install the smoke alarm properly, following this instruction leaflet.
- Test your smoke alarm weekly.
- Replace the battery immediately once depleted.

- Do not smoke in bed.
- Keep matches & lighters away from children.
- Store flammable materials in a proper manner and never use them near naked flames or sparks.
- Maintain emergency equipment such as Fire Extinguishers, Fire Blankets, Escape Ladders etc and ensure all occupants know how to use them correctly.
- Plan an escape route/s from your building in advance and ensure all occupants are aware of them. Re-enforce this awareness periodically throughout the year.
- Make sure escape routes remain free of any obstructions.

ALTHOUGH A SMOKE ALARM CAN HELP SAVE LIVES BY PROVIDING AN EARLY WARNING OF A FIRE, IT IS NOT A SUBSTITUTE FOR PROPERTY INSURANCE OR LIFE INSURANCE OF ANY KIND. APPROPRIATE INSURANCE COVER IS THE RESPONSIBILITY OF THE HOME OWNER.

THIS PRODUCT IS A SEALED UNIT AND CANNOT BE REPAIRED. IF THE UNIT IS TAMPERED WITH IT WILL INVALIDATE THE WARRANTY. IF THE UNIT IS FAULTY PLEASE RETURN IT WITH YOUR PROOF OF PURCHASE TO YOUR PLACE OF PURCHASE.

### SMOKE ALARM WARRANTY

PSA Products Pty Ltd warrants to the original purchaser each new smoke alarm to be free from defects in materials and workmanship, under normal use and services, for a period of two (2) years from the date of purchase. The company will not be obligated to repair or replace parts which are found to be in need of repair or replace parts because of misuse, damage or alterations incurred after date of purchase. PSA Products Pty Ltd agrees to repair or replace, at its option, any defective smoke alarm provided that it is returned with proof of purchase and return postage prepaid to PSA Products Pty Ltd. To the extent permitted by law, the liability of PSA Products Pty Ltd arising from the sale of this smoke alarm or under the terms of this

limited warranty, shall not in any case exceed the cost of a replacement smoke alarm and subject to this clause, in no case shall PSA Products Pty Ltd be liable for consequential loss or damages resulting from the failure of the smoke alarm or breach of this, or any other warranty, express or implied, loss or damage caused by failure to abide by the instructions supplied in this user manual. This warranty is an addition to and does not exclude the rights of consumers under the Australian Trade Practices Act 1974, or any other law which may not be excluded.

Register this product for warranty on-line; [www.psaproducts.com.au](http://www.psaproducts.com.au)

It is recommended that smoke alarms to be replaced every 10 years.

Another Quality Product by:



PSA Products Pty Ltd  
17 Millicent Street  
Burwood  
Victoria 3125

Ph: (03) 9888 9889  
Fax: (03) 9888 9993  
E-mail: [enquiry@psaproducts.com.au](mailto:enquiry@psaproducts.com.au)  
Website: [www.psaproducts.com.au](http://www.psaproducts.com.au)



**WARNING: DESIGN PATENT**  
SMOKE ALARM MODELS LIFPE9/1, LIFPE9M ARE PRODUCTS DESIGNED BY PSA PRODUCTS PTY LTD. THEY MUST NOT BE REPRODUCED OR COPIED. LEGAL ACTION WILL BE TAKEN AGAINST ANY INFRINGEMENT.