

## Quick Setup Guide

# PSA Centrii App for NVR App

Welcome to your PSA Centrii CCTV system.

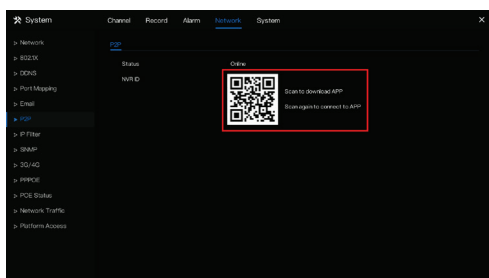
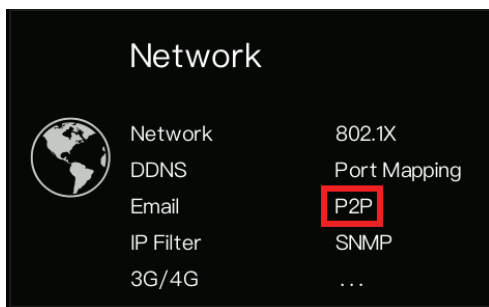
This Quick Setup Guide shows how to connect the PSA Centrii App to your PSA Centrii NVR for remote access via a smartphone.

First, follow the "PSA Centrii NVR Quick Setup Guide" to setup your NVR.

Confirm your NVR is connected to your Internet modem via an Ethernet network cable. Ensure your modem is online to the Internet.

### Step 1 Find NVR QR Code

- On your NVR, right click to show the popup Main Menu.
- Click "P2P" under the Network section of the Main Menu.
- This QR Code will be scanned twice:  
(1) as the App download  
(2) as the NVR ID (in Step 6c).

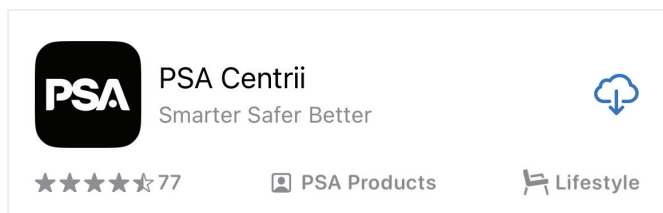


### Step 2 Installing PSA Centrii App

- Scan the QR Code with your phone to download the App.

**Tip:** You can also manually search for PSA Centrii " in your App Store (iOS) or Google Play store (Android).

- Follow your app store instructions to download and install the PSA Centrii app.



### Step 3 Register App account

- Start the PSA Centrii app.
- Tap "Sign Up" to register a free account with your Email address. Follow the app instructions to setup & verify your new PSA Centrii account.



### Step 4 Log in to App

- Tap "Log In" for the Login page.
- Enter your newly registered account details.  
Tap "Log In" to confirm.

**Important:** Your NVR will be bound to this login account, which will manage all online App access to your NVR.

### Step 5 App Permissions

When prompted, allow necessary permissions for App to operate.

**Important:** Tap "Allow" to permit Notifications from your NVR. (e.g. for motion detection alerts)

#### "PSA" Would Like to Send You Notifications

Notifications may include alerts, sounds and icon badges. These can be configured in Settings.

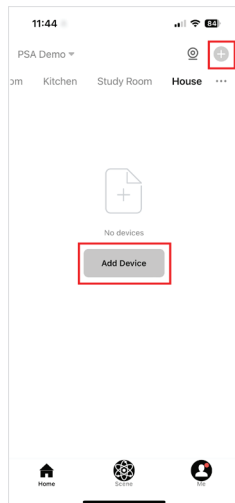
Don't Allow

Allow

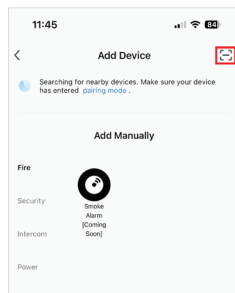
# PSA Centrii App for NVR App

### Step 6 Pair the NVR to App

- a. Tap **"Add Device"** (or the **"+"** icon) to add your NVR.

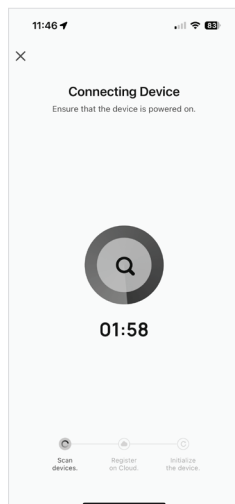


- b. Tap **"-"** icon (top right corner) to start the QR code scanner.



- c. Aim the phone camera at the QR Code on the NVR screen (as seen in Step 1c).

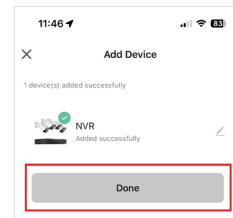
- d. This starts the pairing process, which may take up to 2 minutes to complete.



### Step 7 Successful Pairing

The App will report successful pairing.

Tap **"Done"** to return to Main



Tap the NVR icon to enter Live View.

