

## 1 Smart WiFi Setup

### Install the Camera from Smartphone/Tablet

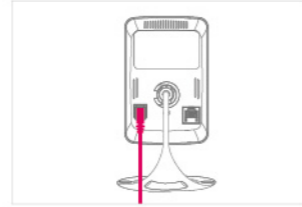
#### Yes717 YesCam's Operation System Requirements

**iOS iPhone · iPad**  
Requires iOS 6.0 or later

**Android Smartphone · Tablet**  
Requires Android 4.0 or Later

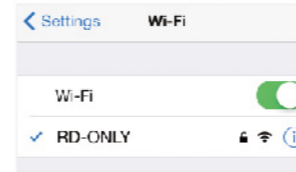
Install the Camera from Smartphone/Tablet >>>

Connect the power adapter to the camera



Power on the camera, do not connect the Ethernet cable.

Connect your smartphone or tablet to your WiFi network



Please enable the wireless connection of your device before doing the following settings.

## 2 Download the YesCam View APP

Please search for the software "YesCam View" in App Store for iPhone/iPad or in Android Market for Android devices.

You can also download the App by scanning QR code:



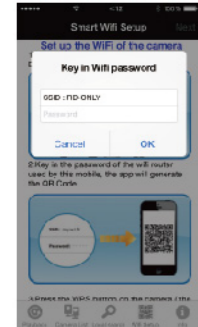
YesCam View



iPhone App YesCam View  
iPad App YesCam View HD  
Android App YesCam View

## 3

### 3.1 Starting WiFi Setup



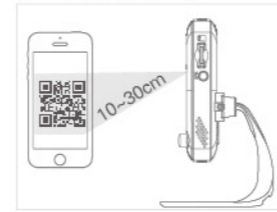
- 1 Press WiFi Setup button to launch the Smart WiFi Setup process.
- 2 Read through the instructions and press Next to continue the setup.
- 3 Enter the password for your WiFi network then press OK.
- 4 A QR code appears on the screen with your WiFi network details.

### 3.2 Press the WPS Button



Press the WPS Button on the Camera. The LEDs will start flashing.

### 3.3 Scan the QR Code



Place your device about 10-30cm away from the camera. The camera scans the QR code on your device to connect to the WiFi network and beeps once it is successfully scanned.

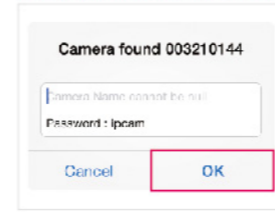
When the camera recognized the QR code, it will flash the LEDs and start the WiFi connection.

### 3.4 WiFi Connection is Established



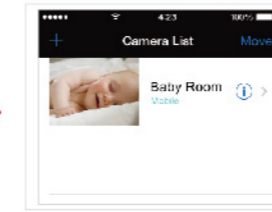
When the wireless connection is established, the blue LED will be flashing and the red LED will remain on.

### 3.5 Enter a Name for Your Camera



After the WiFi connection is established, there will be a pop-up message to ask you to enter a name for your camera. Click OK and the camera will be added to the camera list, then the setup is done.

### 3.6 Smart WiFi Setup Complete



Tap the name of the camera in Camera List to connect to the camera.

From the Camera List, tap Arrow button to get the camera's information and settings.

**! For security, a separate admin user name and password is required to change camera settings.**

Default admin user name: admin  
Default admin password: \_\_\_\_\_ (leave blank)

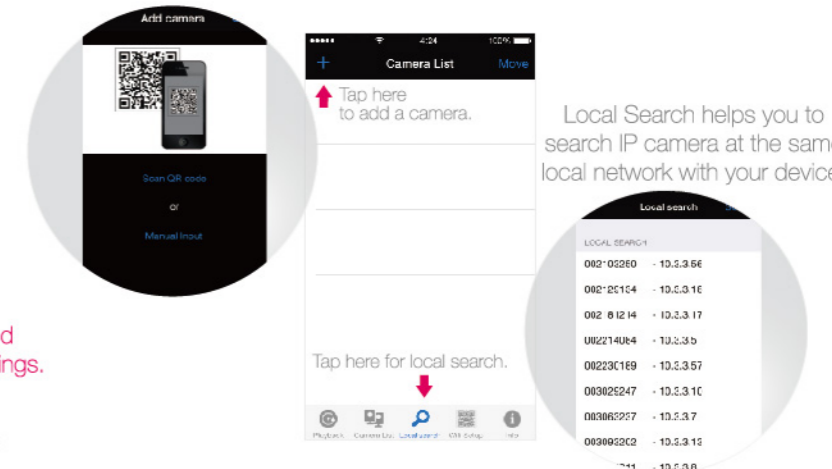
## 4

### Wired Connection

If the WiFi setup is done, please skip this page.

First, connect the power adapter. Second, connect an ethernet cable to the NAT/Router. Third, download the YesCam View App.

There are two ways to add camera, scan the QR code or manual input.

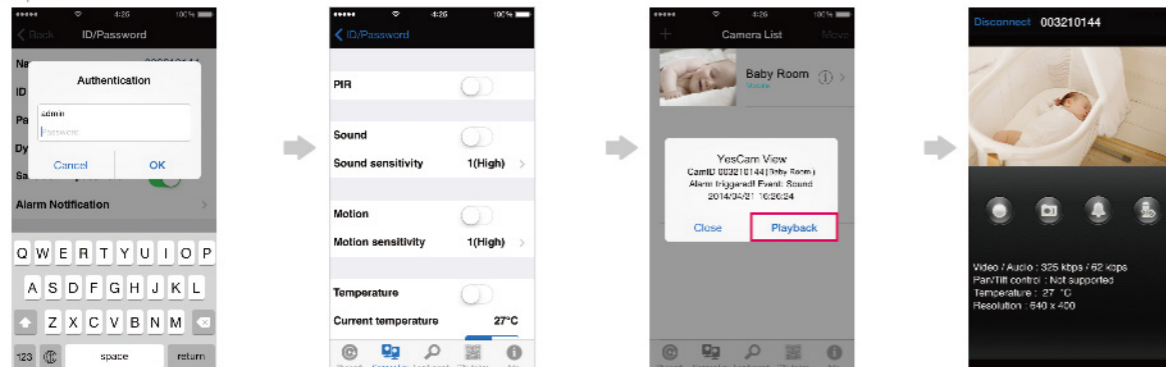


Local Search helps you to search IP camera at the same local network with your device.

## 5

### Push Notification

You will get the notification from your mobile devices once there is an event detected by the PIR body sensor, sound detector, motion detector or infrared thermometer, even if the mobile is on sleep mode.



"Tap Arrow button" → "Tap Alarm Notification" → "Enter the admin user name and password" → "Select the trigger source for alarm notification" → "Tap Update"

**! Default admin user name: admin  
Default admin password: \_\_\_\_\_ (leave blank)**

After enabled the alarm notification, you will receive a pop-up message once the alarm was triggered by any event.

Tap View to see the live video.

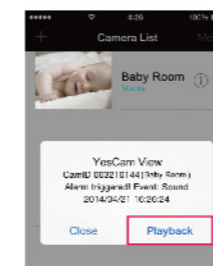
## 6

### Playback the push video

**5 Seconds Pre-recording**

**Note: Class 10 micro SD is prerequisite.**

With the 5 second pre-recording function, it could help you to understand what was really going on.



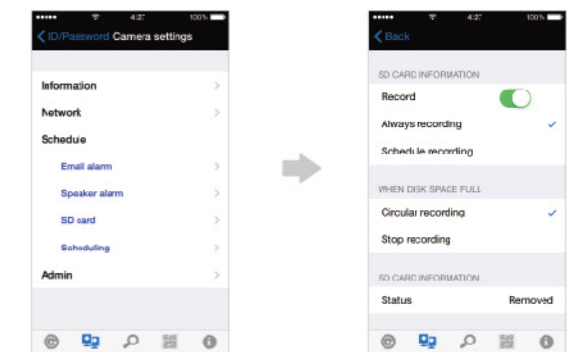
Once the micro SD card is inserted into the camera. The camera would record the video 5 seconds prior to the actual event.

You can play back the video when you receive the push notification on your device.

## 7

### SD Card Recording Setup

Please make sure the SD card has been inserted before doing the following settings. (Yellow LED on indicates the SD card has been inserted.)

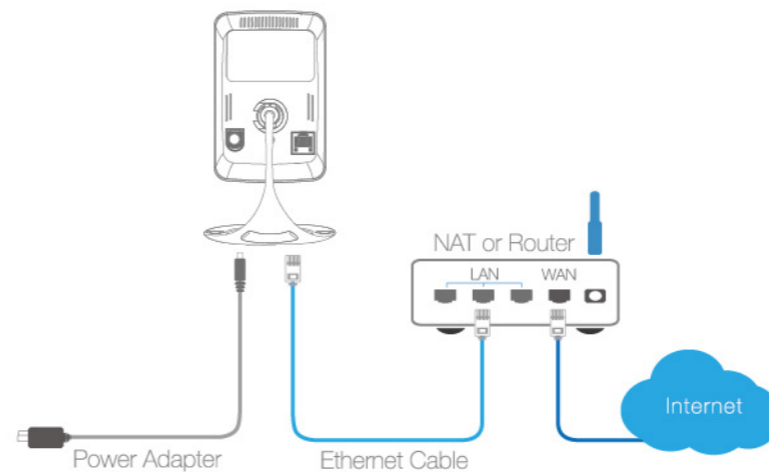


"Tap Arrow button" → "Tap Camera settings" → "Tap Schedule" → "Tap SD Card" → "Enable Recording"

When the disk space is full, you could choose circular recording or stop recording.

## 1 Wired Connection

- A Connect the power adapter.
- B Connect the Ethernet cable to the NAT/Router.
- C After Step A and Step B, the IP Camera will get IP address from the NAT/Router (with DHCP enabled) automatically. Check if the red LED of IP camera is always on. If it's blinking, please check step A and step B again.



## 2 Install YesCam View Software

### Windows

Put the Installation CD into your computer. After the setup menu opened, select "Install Management Software" and follow the instruction as prompted.



### MAC

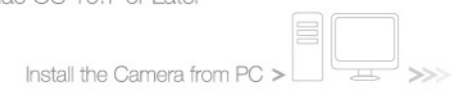
Double click the .dmg software in the Installation CD, pull the YesCam View icon over the selected position and the YesCam View software installation will be finished then.

You can also go to [www.yescam.com/support.html](http://www.yescam.com/support.html) to download the YesCam View Software.

## Install the Camera from Computer

### Yes717 YesCam's Operation System Requirements

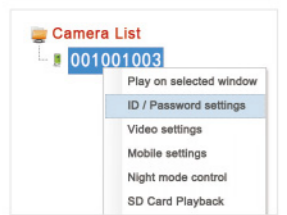
- Windows**  
Requires Windows XP / Windows 7
- Mac OS**  
Requires Mac OS 10.7 or Later



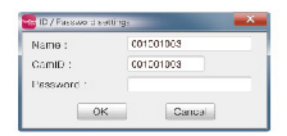
## 3 See the video



Drag the camera on the "Auto Search" area to the "Camera List" area.

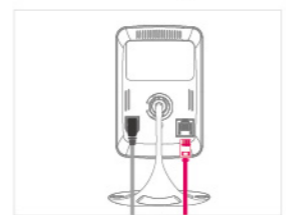


Right click the camera on the camera list and choose the ID/Password Settings.



Key-in the password given on the ID/Password Card then you can see the video. (Name is changeable)

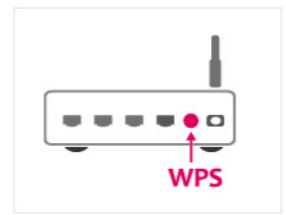
## 4 Wireless Settings of IP Cam If router has WPS Button



Remove the Ethernet cable from the camera



Press the WPS button on the camera



Press the WPS button on the NAT/Router, the blue LED on the IP Cam will start blinking.

If the LED stops blinking and is always on, the wireless network is connected successfully.

## 5 Wireless Connection Settings If no WPS on router

When you need to use the camera with Wifi Connection, please follow the Step 1 and make sure the Ethernet cable is connected to the IP Cam then follow the steps below for the Wifi Setting.



Go to the Web configure of IP Cam  
Right click camera on the "Auto Search" area and click "Web Configure".



Enter the admin account and password  
The default admin account: admin  
The default password: \_\_\_\_\_ (leave blank)



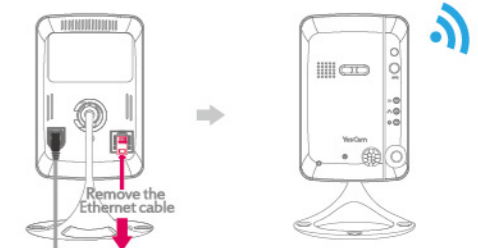
### Wireless Connection Settings

A Click the Internet connection → Wireless connection  
Click the "Wifi Scan" button. Choose the wireless AP.  
If the scan fails, please check the antenna or the WiFi Access Point.

B Choose the wireless AP and key in the encryption key, click "WiFi test" button. If the test succeeded, please press the "Save & Apply" button and go to the next step.

Please do not remove the Ethernet cable during the WiFi test. If the test failed, please go back to the last step.

Remove the Ethernet cable from the IP Camera to start the Wireless connection.



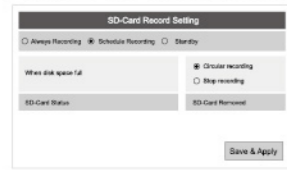
If the WiFi test is successful, remove the Ethernet cable from the IP camera. The Red & Blue LED's will remain on once the wireless connection is operational.

The Wireless connection will not function if you do not remove the Ethernet cable from the IP camera.

## 6 SD Card Recording

Note: Class 10 micro SD is prerequisite.

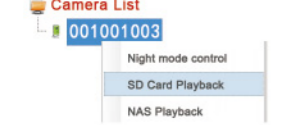
### Enable SD card recording



Choose SD card → SD Card Record Settings on the Web configuration page.

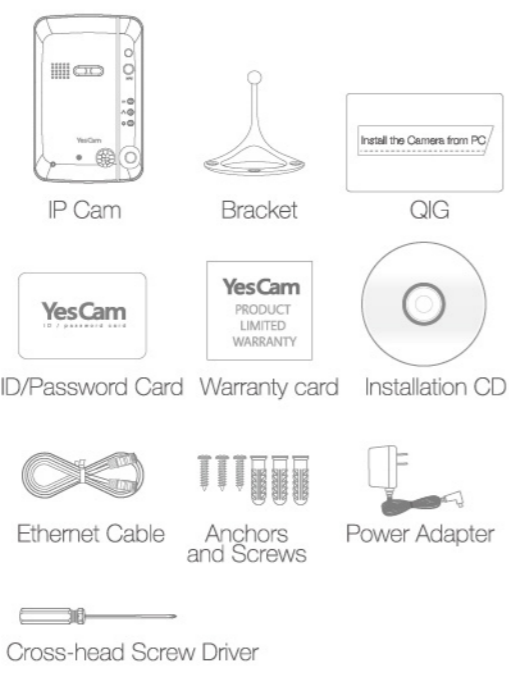
Then do the setting on schedule recording and SD card recording will start functioning after saving.

### SD Card Playback

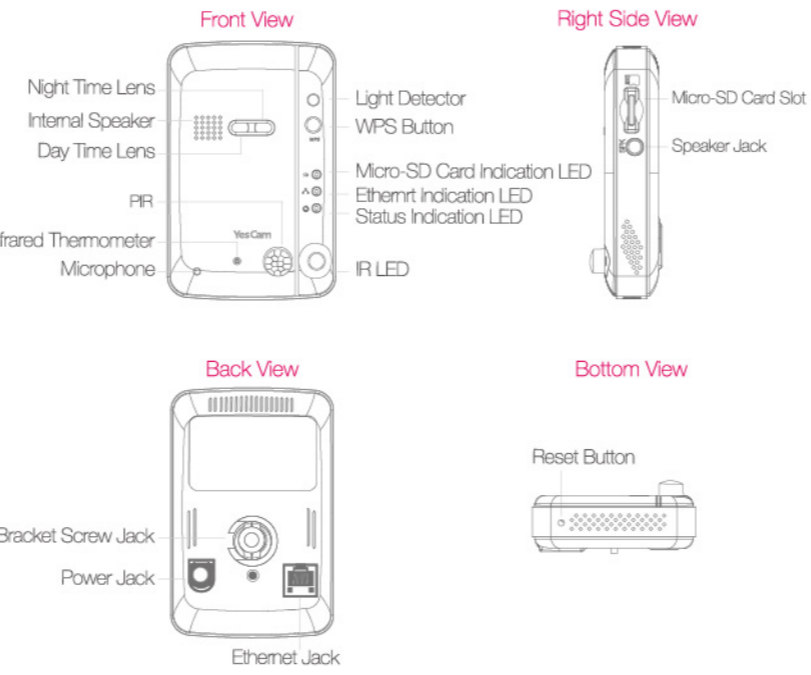


Right Click on the selected camera on the camera list, then choose the SD card playback.

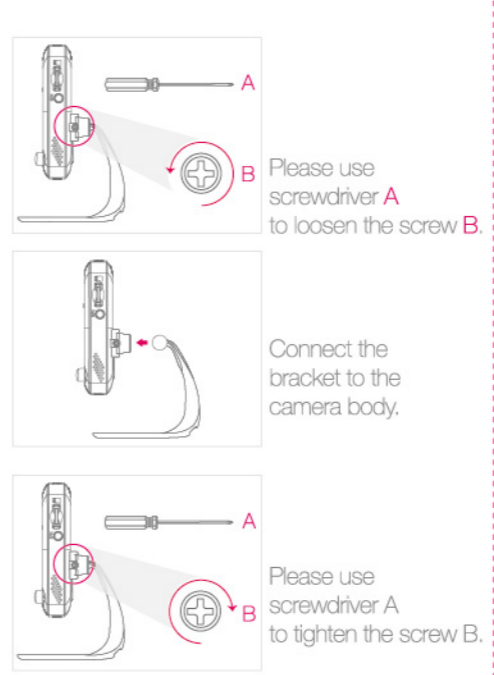
## Package Contents



## Product View



## Bracket Installation Guide



## FAQs

- Q1** What should I do if I have forgotten the password or the ID/Password card is missing?  
**Ans** Please press the Reset button for five seconds. The IP camera will reset to the factory default settings. The default video-play password is yescam (lowercase).
- Q2** What should I do if I cannot see the video remotely?  
**Ans** The red LED of the IP camera should be remain on when the IP camera is connected to the Internet. If the red LED is blinking, please double check the network connection and settings again.
- Q3** I can see the video in a remote place, but the video quality is not good and sometimes the video would disconnect and then reconnect again by itself.  
**Ans** It's probably because the internet bandwidth (internet speed) is not big enough. Please try to apply for a better internet connection from your Internet Service Provider or decrease the bandwidth setting of the IP camera.
- Q4** What is the default admin user name/password?  
**Ans** Default admin user name: admin  
Default admin password: \_\_\_\_\_ (leave blank)
- Q5** Where to download the latest YesCam View software?  
**Ans** Please refer to the following website to download the latest YesCam View software. [www.yescam.com](http://www.yescam.com)