

INSTALL THE CAMERA FROM Smart Phone / TABLET

Yes731

YESCAM'S OPERATION SYSTEM REQUIREMENTS

IOS IPHONE · IPAD

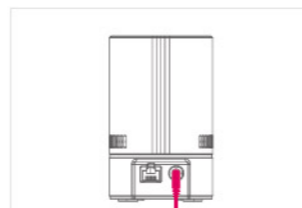
Requires iOS 6.0 or later

ANDROID SMART PHONE · TABLET

Requires Android 4.0 or Later

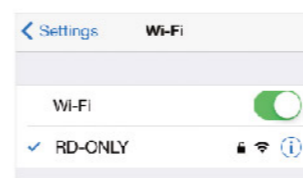
Install the Camera from Smart Phone / Tablet > 

1 SMART WIFI SETUP



CONNECT THE POWER ADAPTER TO THE CAMERA

Power on the camera, do not connect the Ethernet cable.



CONNECT YOUR SMARTPHONE OR TABLET TO YOUR WIFI NETWORK

Please enable the wireless connection of your device before doing the following settings.

2 DOWNLOAD THE YESCAM VIEW APP



YesCam View

Please search for the software "YesCam View" in App Store for iPhone/iPad in Android Market for Android devices.



You can also download the App by scanning QR code

iPhone App YesCam View
iPad App YesCam View HD
Android App YesCam View

3 SETTINGS OF CAMERA



3.1 STARTING WIFI SETUP

- 1 Press WiFi Setup button to launch the Smart WiFi Setup process.
- 2 Read through the instructions and press Next to continue the setup.
- 3 Enter the password for your WiFi network then press OK.
- 4 A QR code appears on the screen with your WiFi network details.



3.2 PRESS THE WPS BUTTON

Press the WPS Button on the Camera. The LEDs will start flashing.



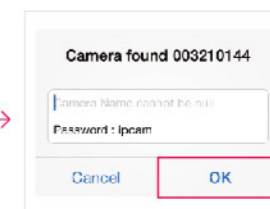
3.3 SCAN THE QR CODE

Place your device about 10-30cm away from the camera. The camera scans the QR code on your device to connect to the WiFi network and beeps once it is successfully scanned. When the camera recognized the QR code, it will flash the LEDs and start the WiFi connection.



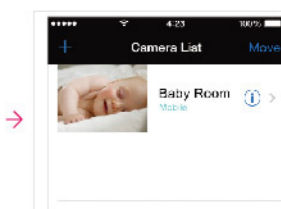
3.4 WIFI CONNECTION IS ESTABLISHED

When the wireless connection is established, the blue LED will be flashing and the red LED will remain on.



3.5 ENTER A NAME FOR YOUR CAMERA

After the WiFi connection is established, there will be a pop-up message to ask you to enter a name for your camera. Click OK and the camera will be added to the camera list, then the setup is done.



3.6 SMART WIFI SETUP COMPLETE

Tap the name of the camera in Camera List to connect to the camera. From the Camera List, tap Arrow button to get the camera's information and settings.

! For security, a separate admin user name and password is required to change camera settings.

Default admin user name: admin
Default admin password: _____(leave blank)

4 WIRED CONNECTION

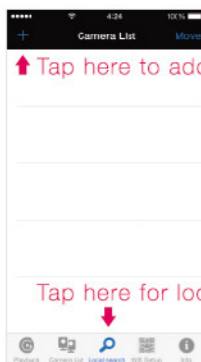
If the WiFi setup is done, please skip this page.

First, connect the power adapter.

Second, connect an ethernet cable to the NAT/Router.

Third, download the YesCam View App.

There are two ways to add camera, scan the QR code or manual input.



Tap here to add a camera

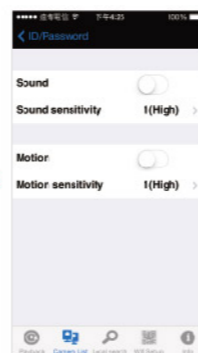
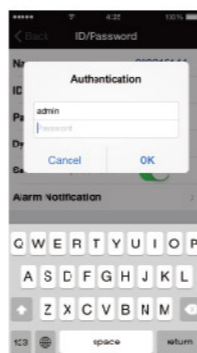


Tap here for local search

Local Search helps you to search camera at the same local network with your device.

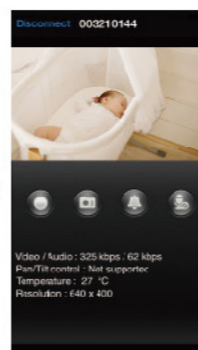
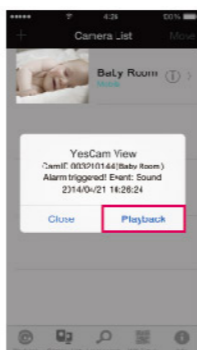
5 PUSH NOTIFICATION

You will get the notification from your mobile devices once there is any event detected by the sound or motion detector, even if the mobile is on sleep mode.



"Tap Arrow button" → "Tap Alarm Notification" → "Enter the admin user name and password" → "Select the trigger source for alarm notification" → "Tap Update"

! Default admin user name: admin
Default admin password: _____(leave blank)



After enabled the alarm notification, you will receive a pop-up message once the alarm was triggered by any event.

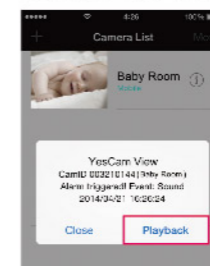
Tap View to see the live video.

6 PLAYBACK THE PUSH VIDEO

5 SECONDS PRE-RECORDING

* NOTE: Class 10 micro SD is prerequisite

With the 5 second pre-recording function, it could help you to understand what was really going on.



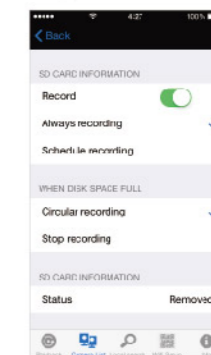
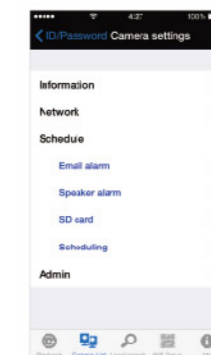
Once the micro SD card is inserted into the camera. The camera would record the video 5 seconds prior to the actual event.

You can play back the video when you receive the push notification on your device.

7 SD CARD RECORDING SETUP

Please make sure the SD card has been inserted before doing the following settings.

(Yellow LED on indicates the SD card has been inserted.)



"Tap Arrow button" → "Tap Camera settings" → "Tap Schedule" → "Tap SD Card" → "Enable Recording"

When the disk space is full, you could choose circular recording or stop recording.

INSTALL THE CAMERA FROM COMPUTER

Yes731

YESCAM'S OPERATION SYSTEM REQUIREMENTS

WINDOWS

Requires Windows XP / Windows 7

MAC OS

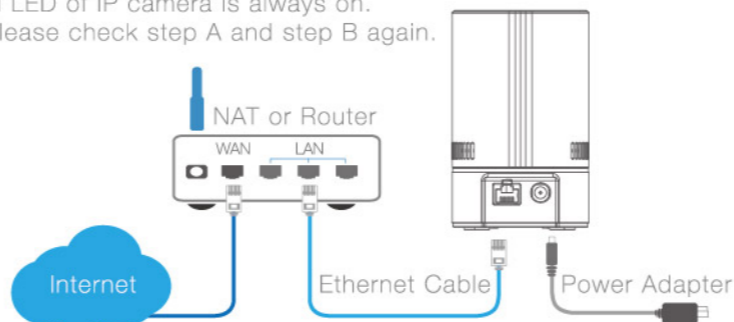
Requires Mac OS 10.7 or Later



Install the Camera from PC >

1 WIRED CONNECTION

- A Connect the power adapter.
- B Connect the Ethernet cable to the NAT/Router.
- C After Step A and Step B, the IP Camera will get IP address from the NAT/Router (with DHCP enabled) automatically. Check if the red LED of IP camera is always on. If it's blinking, please check step A and step B again.



2 INSTALL YESCAM VIEW SOFTWARE

WINDOWS

Put the Installation CD into your computer. After the setup menu opened, select "Install Management Software" and follow the instruction as prompted.

MAC

Double click the .dmg software in the Installation CD, pull the YesCam View icon over the selected position and the YesCam View software installation will be finished then.

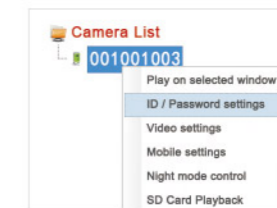
You can also go to www.yescam.com/support.html to download the YesCam View Software.



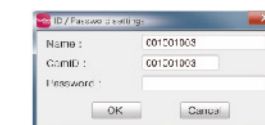
3 SEE THE VIDEO



Drag the camera on the "Auto Search" area to the "Camera List" area.



Right click the camera on the camera list and choose the ID/Password Settings.

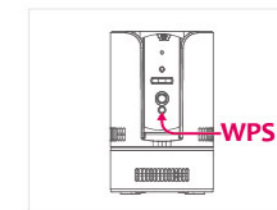


Key-in the password given on the ID/Password Card then you can see the video. (Name is changeable)

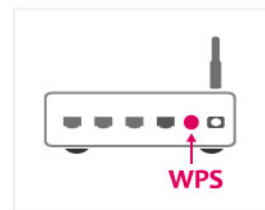
4 WIRELESS SETTINGS OF CAMERA (If Router Has WPS Button)



Remove the Ethernet cable from the camera.



Press the WPS button on the camera.



Press the WPS button on the NAT/Router, the blue LED on the IP Cam will start blinking. If the LED stops blinking and is always on, the wireless network is connected successfully.

5 WIRELESS CONNECTION SETTINGS (If No WPS on Router)

When you need to use the camera with WiFi Connection, please follow the Step 1 and make sure the Ethernet cable is connected to the Camera then follow the steps below for the WiFi Setting.



GO TO THE WEB CONFIGURE OF CAMERA

Right click camera on the "Auto Search" area and click "Web Configure".

ENTER THE ADMIN ACCOUNT AND PASSWORD

The default admin account: admin.
The default password: _____ (leave blank)



WIRELESS CONNECTION SETTINGS

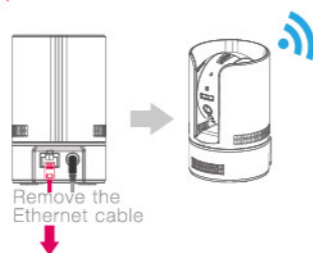
Click the Internet connection → Wireless connection. Click the "WiFi Scan" button, Choose the wireless AP. If the scan fails, please check the antenna or the WiFi Access Point.



Choose the wireless AP and key in the encryption key, click "WiFi test" button. If the test succeeded, please press the "Save & Apply" button and go to the next step. Please do not remove the Ethernet cable during the WiFi test. If the test failed, please go back to the last step.

REMOVE THE ETHERNET CABLE FROM THE CAMERA TO START THE WIRELESS CONNECTION

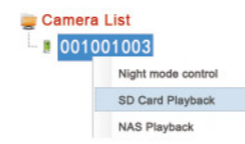
If the WiFi test is successful, remove the Ethernet cable from the camera. The Red & Blue LED's will remain on once the wireless connection is operational. The Wireless connection will not function if you do not remove the Ethernet cable from the camera.



6 SD CARD RECORDING * NOTE: Class 10 micro SD is prerequisite



ENABLE SD CARD RECORDING
Choose SD card → SD Card Record Settings on the Web configuration page. Then do the setting on schedule recording and SD card recording will start functioning after saving.



SD CARD PLAYBACK
Right Click on the selected camera on the camera list, then choose the SD card playback.

FAQs Q1 WHAT SHOULD I DO IF I HAVE FORGOTTEN THE PASSWORD OR THE ID/PASSWORD CARD IS MISSING?

Ans Please press the Reset button for five seconds. The camera will reset to the factory default settings. The default video-play password is YesCam (lowercase).

Q2 WHAT SHOULD I DO IF I CANNOT SEE THE VIDEO REMOTELY?

Ans The red LED of the camera should be remain on when the camera is connected to the Internet. If the red LED is blinking, please double check the network connection and settings again.

Q3 I CAN SEE THE VIDEO IN A REMOTE PLACE, BUT THE VIDEO QUALITY IS NOT GOOD AND SOMETIMES THE VIDEO WOULD DISCONNECT AND THEN RECONNECT AGAIN BY ITSELF.

Ans It's probably because the internet bandwidth (internet speed) is not big enough. Please try to apply for a better internet connection from your Internet Service Provider or decrease the bandwidth setting of the camera.

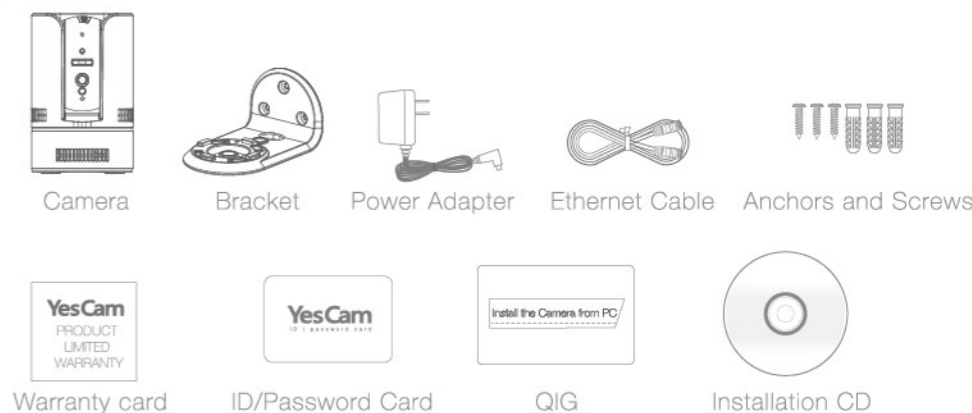
Q4 WHAT IS THE DEFAULT ADMIN USER NAME/PASSWORD?

Ans Default admin user name: admin
Default admin password: _____ (leave blank)

Q5 WHERE TO DOWNLOAD THE LATEST YESCAM VIEW SOFTWARE?

Ans Please refer to the following website to download the latest YesCam View software. www.yescam.com

PACKAGE CONTENTS



PRODUCT VIEW

