

PENDANT MOUNTING BRACKET - 200mm



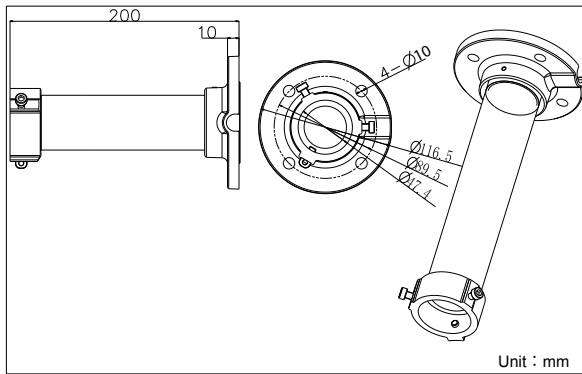
HLDS-1661ZJ



Features:

- Aluminum alloy material with surface spray treatment
- General design for indoor/outdoor
- Design of cable entrance hole
- Better water proof with rubber pad design
- With safety rope, the assembling is safer and more convenient

Dimension:



Model Suitable:

HLPTZ-N4425I-DE

Parameters:

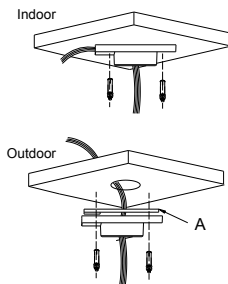
Model	DS-1661ZJ
Parameter	Pendent Mounting Bracket In/Outdoor
Color	Hik white
Feature	Suitable for speed dome pendent mounting (not suitable for DS-2AE-714)
Material	Aluminum alloy
Dimension	Φ 116.5× 200mm
Weight	600g

Notice:

- Pay attention to the color matching when select bracket
- The bracket should be installed on the flat surface of a wall
- The wall must be capable of supporting more than 3 times the total load of the camera and the mount.
- The maximum load capacity of the mount is 30KG

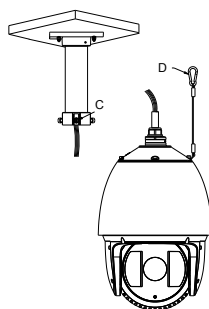
Installation steps:

- ① Choose the appropriate wall to mount the ceiling , and rubber blanket should be added when assembling outdoors



A: Waterproof rubber blanket

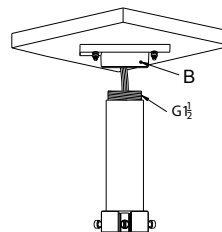
- ③ Fasten the safety rope, thread the line and assemble the speed dome



C: Safety rope hook

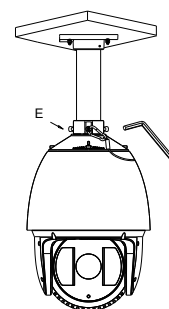
D: Safety rope

- ② Twist and fix the screwed pipe after threading



B: Screw hole

- ④ Fasten the snap joint fixing screw



E :Snap joint fixing screw.



FIRE
SECURITY
INTERCOMS

psaproducts.com.au
1300 772 776
enquiry@psaproducts.com.au