

**LIFESAVER****For model: LIF10YPE**

# Photoelectric Smoke Alarm Installer's Guide



Lithium (non-replaceable sealed in) Battery-Operated Photoelectric Smoke Alarm with HUSH™ Control to temporarily silence nuisance alarms.

Ionisation sensing alarms may detect invisible fire particles (associated with fast flaming fires) sooner than photoelectric alarms. Photoelectric sensing alarms may detect visible fire particles (associated with slow smoldering fires) sooner than ionisation alarms. Home fires develop in different ways and are often unpredictable. For maximum protection, PSA recommends that both Ionisation and Photoelectric alarms be installed.

Installation instructions and product information can be found within this manual.

 Read these instructions **thoroughly** before proceeding.

## CONTENTS

- 1 -- RECOMMENDED LOCATIONS FOR ALARMS**
- 2 -- LOCATIONS TO AVOID**
- 3 -- INSTALLATION INSTRUCTIONS**
- 4 -- OPERATION AND TESTING**
- 5 -- ALARM VISUAL AND AUDIBLE INDICATORS**
- 6 -- MAINTENANCE**
- 7 -- PSA RECOMMENDATION**
- 8 -- SERVICE AND WARRANTY**

## ENVIRONMENTAL PROTECTION

Waste electrical products should not be disposed of with household waste. Please recycle where facilities exist. Check with Local Authority or Installer for recycling advice.

## 1. RECOMMENDED LOCATIONS FOR ALARMS

- Locate the first alarm in the immediate area of the sleeping rooms. Try to monitor the exit path as the sleeping rooms are usually farthest from the exit. If more than one sleeping area exists, locate additional alarms in each sleeping area.
- Locate additional alarms to monitor any stairway as stairways act like chimneys for smoke and heat.
- Locate at least one alarm on every floor level.
- Locate an alarm in every sleeping room.
- Locate an alarm in every room where electrical appliances are operated (i.e. portable heaters or humidifiers).
- Locate an alarm in every room where someone sleeps with the door closed. The closed door may prevent an alarm not located in that room from waking the sleeper.
- Smoke, heat, and combustion products rise to the ceiling and spread horizontally. Mounting the smoke alarm on the ceiling in the center of the room places it closest to all points in the room. Ceiling mounting is preferred in ordinary residential construction.
- When mounting an alarm on the ceiling, locate it at a minimum of 30 cm from the side wall. (see Figure 1).
- When mounting the alarm on the wall, use an inside wall with the top edge of the alarm at a minimum of 30 cm and a maximum of 50 cm below the ceiling. (see Figure 1).
- In homes that are not well insulated, extreme heat or cold can be transferred from the outside to the inside through poorly insulated walls and roof. This may create a thermal barrier which can prevent the smoke from reaching an alarm mounted on the ceiling. If you are not sure about the insulation in your home, or if you notice that the outer walls and ceiling are either hot or cold, install the alarm on an inside wall. In such homes, install the smoke alarm with the top edge of the alarm at a minimum of 30 cm and a maximum of 50 cm below the ceiling (see figure 1).
- Put smoke alarms at both ends of a bedroom hallway or large room if the hallway or room is more than 9.1 m (30 feet) long.
- Install Smoke Alarms on sloped, peaked or cathedral ceilings at or within 0.9 m (3 ft) of the highest point (measured horizontally). Smoke alarms in rooms with ceiling slopes greater than .3 m in 2.4 m (1 foot in 8 feet) horizontally shall be located on the high side of the room. A row of detectors shall be spaced and located within 0.9 m (3 ft) of the peak of the ceiling measured horizontally (see Figure 3).
- Install Smoke Alarms on tray-shaped ceilings (coffered ceilings) on the highest portion of the ceiling or on the sloped portion of the ceiling within 12" (305mm) vertically down from the highest point (see figure 4).

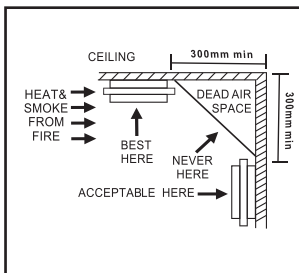


FIGURE 1

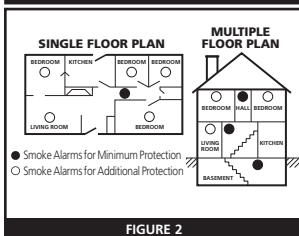
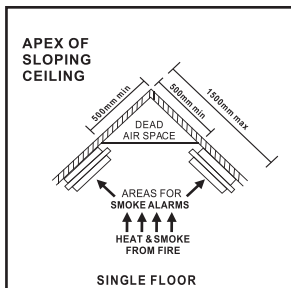


FIGURE 2



SINGLE FLOOR

FIGURE 3

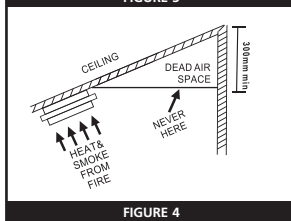


FIGURE 4

## 2. LOCATIONS TO AVOID

- In the garage. Products of combustion are present when you start your motor vehicle.
- Less than 30 cm (4") from a side wall.
- More than 0.9 m (3') from the peak of an "A" frame type ceiling (measured horizontally).
- Less than 50 cm from the peak of an "A" frame type or sloped ceiling (measured vertically).
- In an area where the temperature may fall below 5°C or rise above 45°C, such as garages and unfinished attics; this should include electrical boxes exposed to these environments.
- In dusty areas. Dust particles may cause nuisance alarm or failure to alarm.
- In very humid areas. Moisture or steam can cause nuisance alarms.
- In areas where the Relative Humidity (RH) is above 85%.
- In insect-infested areas.
- Smoke alarms should not be installed within 3 ft (.9m) of the following: the door to a kitchen, the door to a bathroom containing a tub or shower, forced air supply ducts used for heating or cooling, ceiling or whole house ventilating fans, or other high air flow areas.
- Kitchens. Normal cooking may cause nuisance alarms.
- Near fluorescent lights. Electronic "noise" may cause nuisance alarms.
- Smoke alarms are not to be used with detector guards unless the combination (alarm and guard) has been evaluated and found suitable for that purpose.

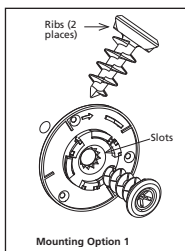
### 3. INSTALLATION INSTRUCTIONS

#### ATTACHING MOUNTING PLATE

##### OPTION 1:

Easy Mount – Drywall Only

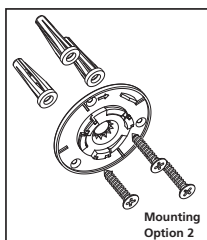
1. Choose a mounting location (wall or ceiling) and drill a 3/16" diameter hole at least 1/2" deep.
2. Insert the provided screw through the mounting plate aligning the ribs on the screw with the slots on the mounting plate.
3. Tighten the screw/mounting plate to wall or ceiling until mounting plate is snug against surface. DO NOT over-tighten.



##### OPTION 2:

Mounting on Other Surfaces

1. Choose a mounting location (wall or ceiling) and using the mounting plate provided as a template, mark three-hole locations.
2. Install the three provided screws through the mounting plate and tighten. DO NOT over-tighten screws. (If mounting in plasterboard or similar surface, drill 3/16" holes and use the plastic anchors provided.) Anchors are not required for mounting on hard surfaces such as wood.



#### ATTACHING AND ACTIVATING THE ALARM

This model is equipped with a feature that automatically activates the alarm when the alarm is attached to the mounting plate for the first time. Once activated, the battery will supply power to the alarm for the life of the alarm (10 years) under normal conditions.

Align the alarm with the mounting plate and rotate clockwise (right) approximately 45° until the unit stops and clicks into place. DO NOT over-tighten. If unit needs to be realigned, rotate the alarm counter clockwise, remove and rotate to desired alignment.

NOTE: The alarm will mount to the plate in three (3) positions (every 120 degrees).

You will know power has been supplied when alarm briefly chirps. Unit will remain on until unit is disabled by the user at alarm's end of life. Do not over tighten the alarm as damage to alarm or mounting surface may occur.

**The alarm is now activated!** After installation/activation, test your alarm as described in Operation and Testing section.

**Warning:** Failure to properly install and activate this alarm will prevent proper operation of this alarm and will prevent its response to fire hazards.

## 4. OPERATION AND TESTING

The smoke alarm is operating once the alarm is activated (see Installation Instructions) and testing is complete. When products of combustion are sensed, the unit sounds a loud 85db pulsating alarm until the air is cleared. If there is any question as to the cause of the alarm, it should be assumed that the alarm is due to an actual fire and the dwelling should be evacuated immediately.

**NOTE: DENSE SMOKE WILL OVERRIDE THE HUSH™ CONTROL FEATURE AND SOUND A CONTINUOUS ALARM..**

**CAUTION: BEFORE USING THE ALARM HUSH™ FEATURE, IDENTIFY THE SOURCE OF THE SMOKE AND BE CERTAIN A SAFE CONDITION EXISTS.**

TESTING: Test your alarm by pressing the test button until the unit chirps, then release the test button.

The unit will then emit 2 sets of three slow beeps.

**NOTE: WEEKLY TESTING IS REQUIRED.**

TEST THE ALARM WEEKLY TO ENSURE PROPER OPERATION. Erratic or low sound coming from your alarm may indicate a defective alarm.

### NUISANCE ALARMS

Smoke alarms are designed to minimise nuisance alarms. Combustion particles from cooking may set off the alarm if the alarm is located close to the cooking area. Large quantities of combustible particles are generated from spills or when grilling/frying. Using the fan on a range hood which vents to the outside (non-recirculating type) will also help remove these combustible products from the kitchen.

If the alarm does sound the smoke alarm pattern of 3 long beeps, check for fires first. If a fire is discovered, evacuate the occupants and call the fire department. If no fire is present, check to see if one of the reasons listed in "To minimise nuisance alarms avoid these locations" may have caused the alarm.

**HUSH™ CONTROL:** The HUSH™ feature has the capability of temporarily desensitizing the alarm circuit for approximately 10 minutes. This feature is to be used only when a known alarm condition, such as smoke from cooking, activates the alarm. The smoke alarm is desensitized by pushing the Test/Hush button on the smoke alarm cover. If the smoke is not too dense, the alarm will silence immediately and the red LED blinks every 10 seconds. This indicates that the alarm is in a temporarily desensitized condition.

The HUSH™ feature can be used repeatedly until the air has been cleared of the condition causing the alarm. Pushing the Test/Hush button on the alarm will end the temporarily desensitized period.

If the smoke is not too dense, after ten minutes the alarm will return to normal operation.

**NOTE:** Dense smoke will override the HUSH™ feature and sound a continuous alarm.

**CAUTION:** Before using the alarm HUSH™ feature, identify the source of the smoke and be certain safe conditions exist.

## 5. Alarm Visual and Audible Indicators

Alarm/ Operational Mode	Visual Indications	Audible Indications	Note:
<b>Smoke or Fire detected</b>	Blink once every 60 seconds	3 blinks synchronized with audible alarm	3 long beeps, repeating
<b>Normal Operation</b>	Blink once every 60 seconds	None	LED will flash every 60 seconds for 10 minutes following power on or reset. After initial 10 minutes, LED will flash once every 10 minutes
<b>Test/Hush Button Press</b>	Blink with each alarm pattern	Two sets of 3 long beeps	Test/Hush button press will initiate test sequence
<b>Smoke Alarm Hush</b>	Blink once every 10 seconds	None (smoke alarm silenced)	Alarm hush feature silences smoke alarm for approx. 10 minutes. See NUISANCE ALARMS section.
<b>Low Battery</b>	Blink once every 30 seconds	Chirp every 60 seconds	Chirp every 60 seconds
<b>Fault Mode</b>	Fault code (2-12 flashes every 30 seconds)	Chirp every 30 seconds	Remove, turn off and replace alarm
<b>End of Unit Life*</b>	2 blinks every 30 seconds	2 chirps every 30 seconds	Remove, turn off and replace alarm

\* End of life hush feature. Silences end of life indication 3 days at a time for a maximum of 30 days.

### End of Life Hush™

This alarm has End of Life Hush™ which allows you to silence the trouble chirp for three days giving you extra time to replace the unit at a more convenient time.

To activate, press the Test/Hush button. While in the End of Life Hush™ mode, the alarm will still detect Smoke.

The End of Life signal can be reset a maximum of 10 times for a total of 30 days. After 10 resets the end of life signal can no longer be silenced and the alarm must be replaced immediately.

## 6. MAINTENANCE

Smoke alarms shall be installed outside each separate sleeping area in the immediate vicinity of the sleeping rooms and on each additional story of the family living unit, including basements and excluding crawl spaces and unfinished attics. In new construction, a smoke alarm also shall be installed in each sleeping room.

### BATTERY ACTIVATION AND DEACTIVATION

NOTE: One Lithium-Ion battery, permanently sealed inside the alarm, powers this unit; no battery installation or replacement is necessary for the life of the alarm.

**IMPORTANT:** Constant exposure to high or low humidity may reduce battery life.

**! WARNING!** DO NOT ATTEMPT TO OPEN THE ALARM FOR ANY REASON!

Do not try to repair the smoke alarm yourself. No serviceable parts included.

**Low battery:** This alarm is equipped with a low battery monitor circuit which will cause the alarm to produce a single “chirp” approximately every 60 seconds and blink the Red LED every 30 seconds, for a minimum of seven (7) days should the battery become low.

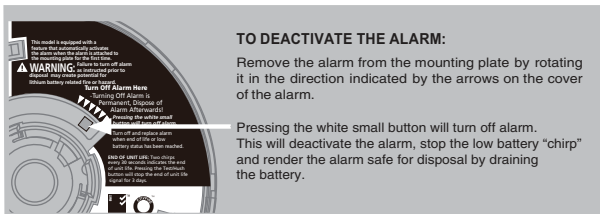
*THE UNIT MUST BE DEACTIVATED (see “Deactivation of Alarm” section) and replaced within 7 days of the first occurrence of the “Low Battery Warning” to provide continuous alarm protection.*

### DEACTIVATION OF ALARM

**! WARNING!**

- Deactivation of the alarm is permanent. Once the alarm has been deactivated, it cannot be reactivated!
- Once deactivated, the alarm will **NO LONGER DETECT SMOKE**.
- Once the alarm is deactivated the battery will be depleted and the alarm will no longer function.
- Once the alarm has been deactivated, it cannot be mounted onto the mounting plate or reactivated.

**! WARNING!** Failure to turn off alarm as instructed prior to disposal may create potential for lithium battery related fire or hazard.



## CLEANING YOUR ALARM

### YOUR ALARM SHOULD BE VACUUMED ONCE A MONTH

You will need to follow the instructions in Installation Section to remove your alarm for maintenance.

To clean your alarm, remove it from the mounting bracket as outlined in the beginning of this section. You can clean the interior of your alarm (sensing chamber) by using compressed air or a vacuum cleaner hose and blowing or vacuuming through the openings around the perimeter of the alarm. The outside of the alarm can be wiped with a damp cloth.

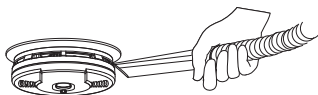
After cleaning, reinstall your alarm and test your alarm by using the test button. If cleaning does not restore the alarm to normal operation the alarm should be replaced. Do not paint the unit. Paint will seal the vents and interfere with the sensor's ability to detect smoke. Never attempt to disassemble the unit or clean inside. This action will void your warranty.

#### Alarm Removal

Refer to the Alarm Tamper Resist Feature section for removal instructions.

To remove the alarm from the mounting plate, rotate the alarm anti-clockwise in the direction of the "OFF" arrow on the cover.

**⚠ WARNING:** Do not attempt to open the alarm for any reason!





## 7. PSA RECOMMENDATIONS

Smoke alarms shall be installed outside each separate sleeping area in the immediate vicinity of the sleeping rooms and on each additional story of the family living unit, including basements and excluding crawl spaces and unfinished attics. In new construction, a smoke alarm also shall be installed in each sleeping room.

## 8. SERVICE AND WARRANTY

If after reviewing this manual you feel that your smoke alarm is defective in any way, do not tamper with the unit. Return it for servicing to: PSA Products Pty Ltd of 17 Millicent Street, Burwood Victoria 3125 (See Warranty for in-warranty returns).

PSA Products Pty Ltd (ABN: 99 076 468 703) of 17 Millicent Street, Burwood 3125 Victoria, Australia warrants this product for a period of ten (10) years from the date of purchase, as reflected on the Authorised Reseller's or Distributor's invoice / receipt provided to you. PSA Products Pty Ltd will repair or replace the product (at the option of PSA Products) due to any manufacturing defect, at the cost of PSA Products Pty Ltd (excluding any labour costs relating to removal or re-installation of product, and transport costs).

This warranty shall not apply to the product if it has been damaged, modified, abused or altered after the date of purchase, or if it fails to operate due to improper maintenance.

To the extent permitted by law, the liability of PSA Products Pty Ltd arising from the sale or under the terms of this limited warranty shall not in any case exceed the cost of replacement and subject to this clause. In no case shall PSA Products Pty Ltd be liable for consequential loss or damages resulting from the failure of the product or breach of this, or: Any other warranty, express or implied, loss or damage caused by failure to abide by the instructions supplied in the leaflets.

To the extent permitted by law, PSA Products Pty Ltd., makes no warranty, expressed or implied, written or oral, including that of merchantability or fitness for any particular purpose, with respect to the consumer replaceable battery if any. A product with non-serviceable built-in battery is covered under warranty of the product.

This warranty is provided in addition to other rights and remedies you have under law: Our goods come with guarantees that cannot be excluded under the Australian Consumer Law. You are entitled to a replacement or refund for a major failure and compensation for any other reasonably foreseeable loss or damage. You are also entitled to have the goods repaired or replaced if the goods fail to be of acceptable quality and the failure does not amount to a major failure. What constitutes a major failure is set out in the Australian Consumer Law.

To make a claim under warranty, take the product (with a proof of purchase) to the store where you purchased the product or contact PSA Products Pty Ltd. Phone (03) 9888 9889. or Email: [enquiry@psaproducts.com.au](mailto:enquiry@psaproducts.com.au) with details, proof of purchase or expense claim in writing.

## **Warranty Form**

Register this product for warranty to ensure fast and effective service.  
Please visit our website **[www.psaproducts.com.au](http://www.psaproducts.com.au)** to register.

Please retain this warranty section and complete the details below.  
When you claim Warranty for the product. Please present this section  
together with the faulty product.

Model: \_\_\_\_\_ Serial Number: \_\_\_\_\_

Date Of Purchase/ Installation: \_\_\_\_\_

Invoice No: \_\_\_\_\_.

Installed By: \_\_\_\_\_

\_\_\_\_\_  
\_\_\_\_\_  
\_\_\_\_\_  
\_\_\_\_\_

Owner's Details: \_\_\_\_\_

**This smoke alarm has an expected service life of 10 years under normal conditions. We recommend that you should replace the smoke alarm after 10 years from installation date to ensure normal operation. Please use a date label as a reminder.**

**THIS SMOKE ALARM HAS BEEN TESTED AND COMPLIES TO AS3786**

**DEAR ELECTRICIAN: PLEASE LEAVE THIS MANUAL FOR THE OWNER.  
THANK YOU FOR CHOOSING THIS SMOKE ALARM.**



Tested and Complies to AS3786



AS 3786 Lic 1377  
SAI Global

*Another Quality Product By:*

**PSA Products Pty Ltd**

17 Millicent Street, Burwood, Victoria 3125

Ph: 1300 PSA PRODUCTS(1300 772 776)

Fax: (03) 9888 9993

Email:enquiry@psaproducts.com.au

Webite:www.psaproducts.com.au